

Pressure Sensitive Fisheries Research and New Designated Waters Licence

Discussion outline

- Results of the upper Oreti camera and angler origin study
- Upper Oreti 2021/22 angler satisfaction survey
- Upper Mataura angler origin assessment
- Key results from Hayes and Lovelock (2019) angler displacement study
- Key results from our national and Southland DW consultation
- Upper Mataura beats

Oreti camera study

- Monitoring angler use on foot is time consuming and expensive!
- Trail cameras overlooked beats – time-lapse photos.
- We monitored angler use of the Oreti beats in 2018/19 and 2021/22 (during boarder closure).
- 2018/19 high levels of angler use at certain times and certain beats (beat occupancy exceeded 60% in many cases).
- 79% of anglers in Jan-April 2019 were NR.
- In 2001, during same period, 69% of angler use was NR.



Oreti Camera study

- In the 2021/22 season, only resident anglers.
- Significant demand from resident anglers (beat occupancy rate still exceeded 50% at certain times).
- ~390% increase in resident angler use of the beats.



Oreti satisfaction survey

- At the end of the 2021/22 season, we surveyed upper Oreti anglers and asked them about their participation and satisfaction.
- 73% of anglers said they encountered less anglers than previous seasons.
- 40% of anglers fished the Oreti more relative to previous season. Of these anglers, 73% stated that reduced pressure/crowding was the reason for their increased fishing effort.
- 51% of respondents enjoyed their fishing on the Oreti more during the 2021/22 season and of those anglers, 71% said less crowding was the reason for increased satisfaction.

Upper Mataura angler use assessment

- Summer period before boarder closures 2019/20, monitored angler use on the upper Mataura between Garston and Nokomai.
- 82% of anglers encountered were non-resident.
- Stu Southerland monitored angler use of the upper Mataura during the in 2001/02 season. During the summer period of 2001/22, 68% of angler use was from NR.

Hayes and Lovelock displacement study

- Dr Stu Hayes and Professor Brent Lovelock assessed angler displacement to and from PSF in Otago and Southland.
- They found that displacement was of immediate concern for the upper Oreti and of moderate concern for the upper Mataura.
- Crowding was a key reason for displacement.
- There were good levels of support for management mechanisms to control crowding from both resident and NR anglers.
- NR anglers were more willing to pay for management mechanisms to control crowding.

ANGLER DISPLACEMENT ON AND FROM PRESSURE- SENSITIVE RIVERS IN OTAGO AND SOUTHLAND



We have the data, management mechanisms to control crowding are required.

The Designated Waters Licence was proposed as a solution.

National DW consultation results

- Broadly speaking, we received a good level of support from resident anglers for:
 - Targeted management restrictions to control crowding on PSF
 - A \$5 fee for a resident full-season DW licence
 - Restricting the frequency in which NR anglers can access DW
 - Charging NR anglers a daily fee for access to DW
- Broadly speaking, we received a good level of support from NR anglers for targeted management restrictions to control crowding and a \$5 fee for a whole-season resident DW licence.
- Limited support for charging NR anglers a daily fee for access to DW and restricting the frequency in which they can access DW.

Southland DW consultation

Anglers were asked:

1. Do you support the proposed implementation of DW licencing on the Oreti River upstream of the SH97 bridge near Mossburn?
2. Do you support the proposed implementation of DW licencing on the Mataura River upstream of the Waikaia River confluence?
3. Are there any other Southland rivers/river reaches, that in your opinion, the DW licence should be applied to?

Southland DW consultation - Results

Angler	River	Support	
		Yes	No
Resident	Oreti	75% (75)	14% (14)
Non-resident	Oreti	13% (13)	73% (67)
Resident	Mataura	65% (65)	25% (25)
Non-resident	Mataura	4% (4)	83% (78)

Southland DW

- Council recommendation: Implement DW licencing on the Oreti and Mataura for the 2023/24 season.
- DOC officials received push-back from NR anglers and fishing guides regarding the Mataura.
- NZC was concerned that the whole DW system was at risk.
- Outcome: existing BC fisheries rolled over to DW
- Oreti is a DW this coming season

DWs - Next steps

- It's not all bad news
- There has been acceptance that overcrowding is a problem
- DW management system has been implemented
- Southland Council has prioritised monitoring of PSF
- Lots of PSF work this season
- If justified with data, we can look to add DWs with time.

DW – how will it work

- Residents
- \$5 fee to obtain a whole season regional DW licence.
- Fishing in that regions' DW as much as you like
- Non-residents
- \$40 Daily fee to fish in a regions' DW
- Maximum of five DW licences per region, per season.

Advantages of the DW system

Data collection will improve – improved management decisions

Manage NR pressure

Adaptable system

Upper Mataura Beat system

- Oreti Beat system is highly regarded by anglers.
- Helps anglers know where other anglers are fishing.
- Reduces contacts on the river and improves satisfaction.
- More beat systems requested during angler consultation on DW.
- Beat system established on the Mataura River from Ardlussa to Roberts Creek confluence

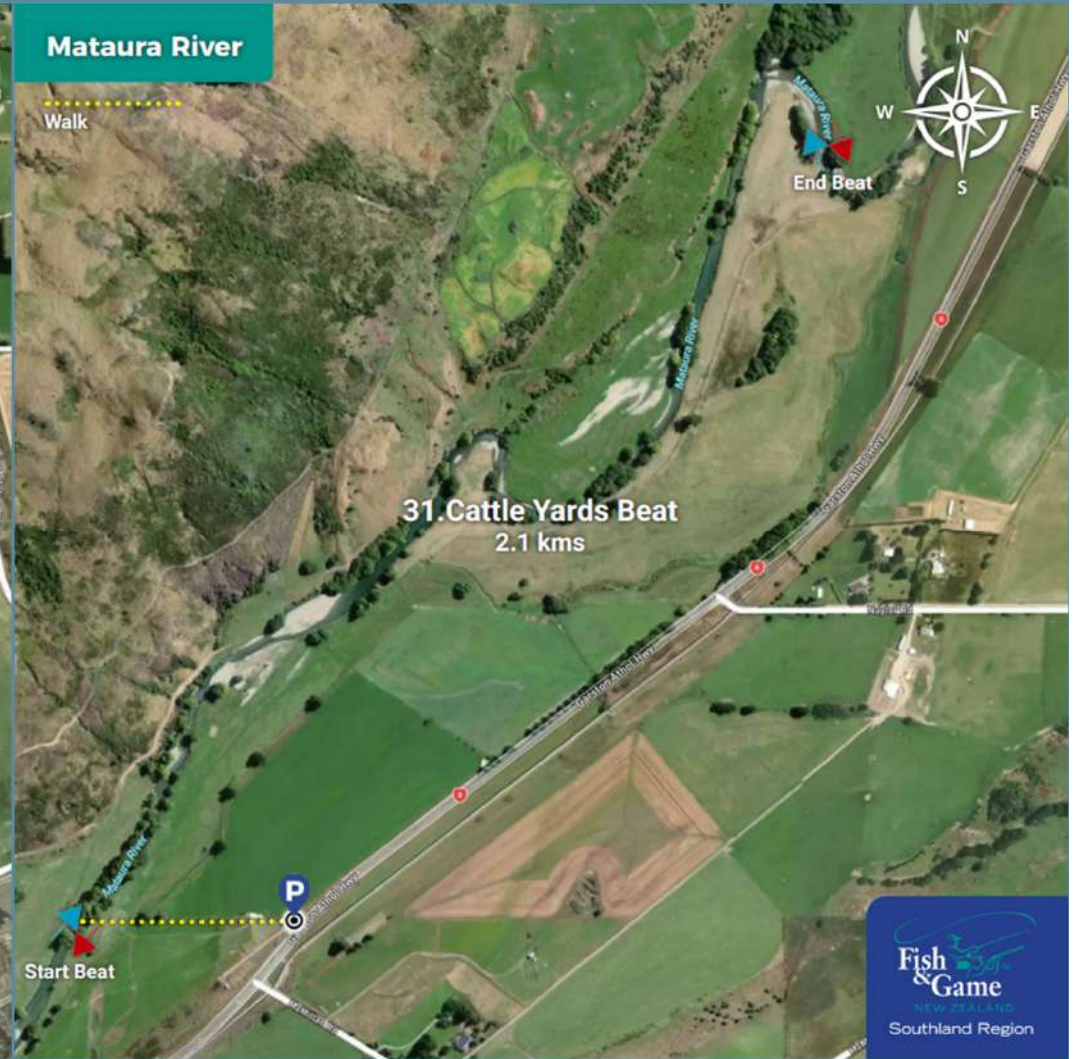
Upper Mataura Beat system

- Forty-four beats in total
- Ardlussa Bridge to Roberts Creek – 87Km
- 2km in length on average (range 0.7km-4.2km)
- Lots of new flash signs
- Beat markers (with time)
- Similar to Oreti beat system, park next to a sign to indicate where you are fishing.

Mataura River



Mataura River



New access maps!

<https://fishandgamenzaccess.org/fg-southland-region/>

My picks for this season

- Lower Aparima – Gummies Bush
- Oreti – Centre Bush
- Clinton/Worsley

